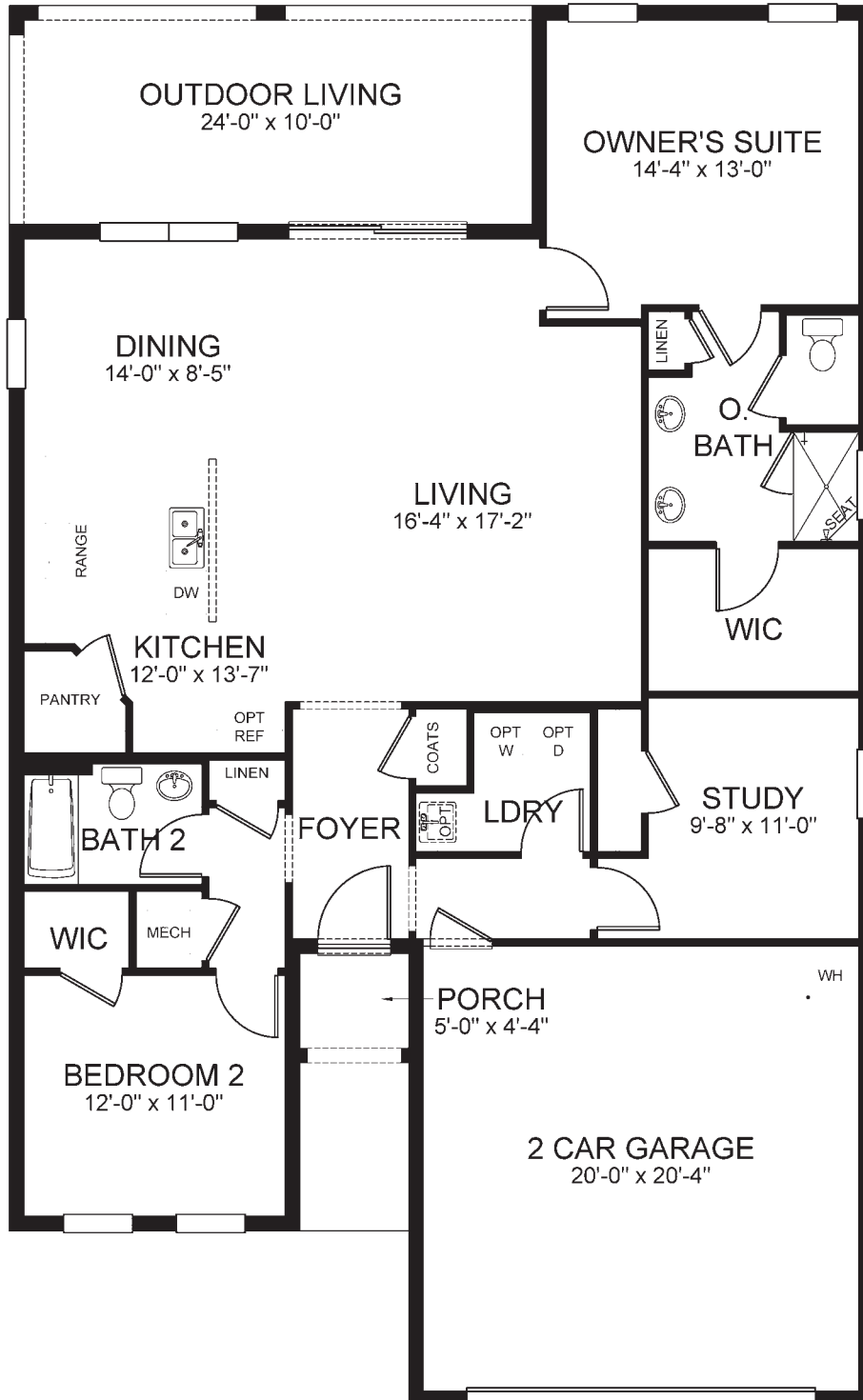




Elevation A



Elevation B



D.R. Horton is A Equal Housing Opportunity Builder. Home and community information, including pricing, included features, terms, availability and amenities, are subject to change and prior sale at any time without notice or obligation. Pictures, photographs, colors, features, and sizes are for illustration purposes only and will vary from the homes as built. Square footage dimensions are approximate. Florida Registered Building Contractor License #CBC1258802. 2.1.19



ARTIST RENDERING

Elevation A



ARTIST RENDERING

Elevation B



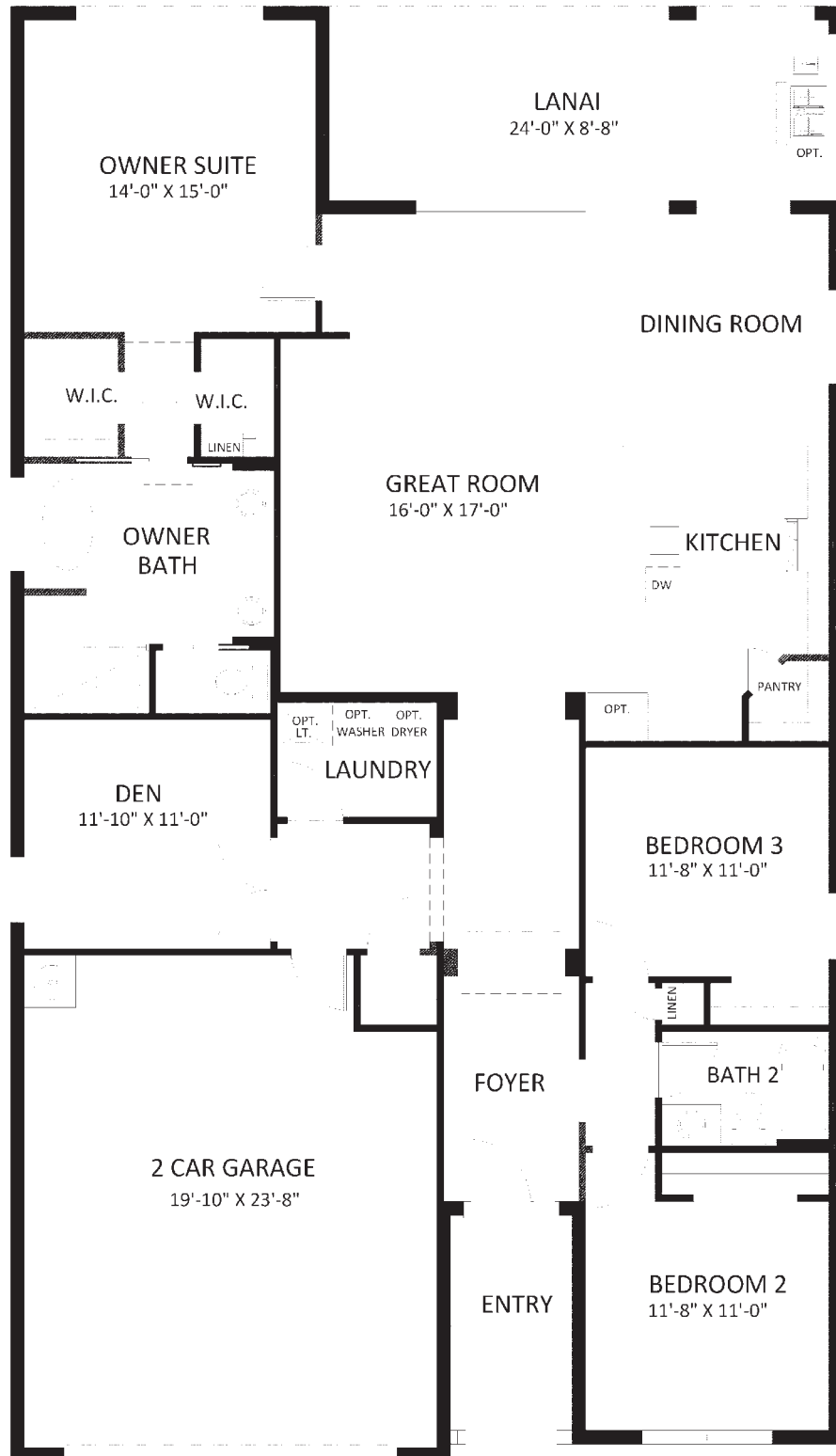
D.R. Horton is A Equal Housing Opportunity Builder. Home and community information, including pricing, included features, terms, availability and amenities, are subject to change and prior sale at any time without notice or obligation. Pictures, photographs, colors, features, and sizes are for illustration purposes only and will vary from the homes as built. Square footage dimensions are approximate. Florida Registered Building Contractor License #CBC1258802. 11/26/18



Elevation L



Elevation M



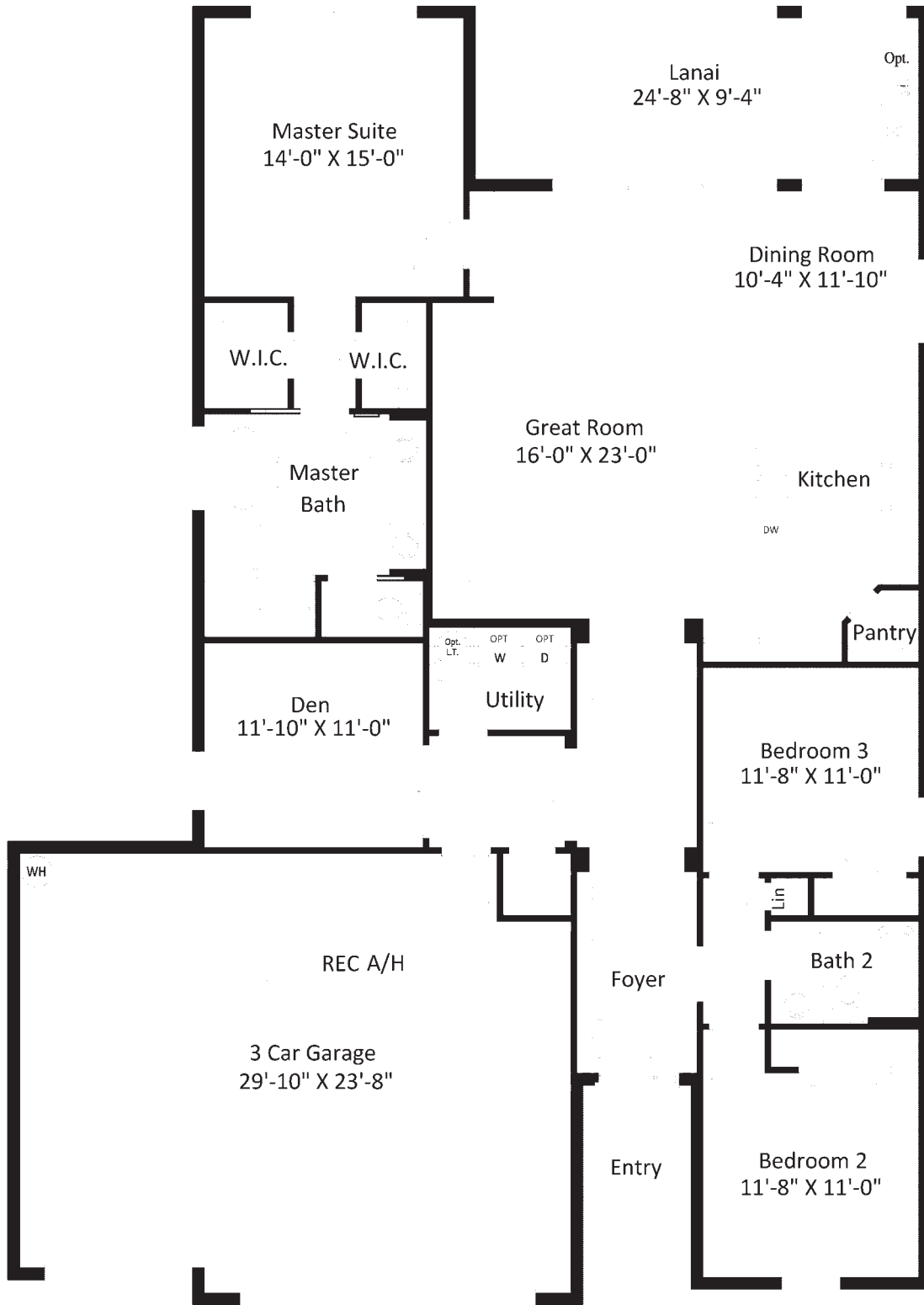
D.R. Horton is A Equal Housing Opportunity Builder. Home and community information, including pricing, included features, terms, availability and amenities, are subject to change and prior sale at any time without notice or obligation. Pictures, photographs, colors, features, and sizes are for illustration purposes only and will vary from the homes as built. Square footage dimensions are approximate. Florida Registered Building Contractor License #CBC1258802. 2.6.19



Elevation L



Elevation M



D.R. Horton is A Equal Housing Opportunity Builder. Home and community information, including pricing, included features, terms, availability and amenities, are subject to change and prior sale at any time without notice or obligation. Pictures, photographs, colors, features, and sizes are for illustration purposes only and will vary from the homes as built. Square footage dimensions are approximate. Florida Registered Building Contractor License #CBC1258802. 11/26/18





Elevation A



Elevation B



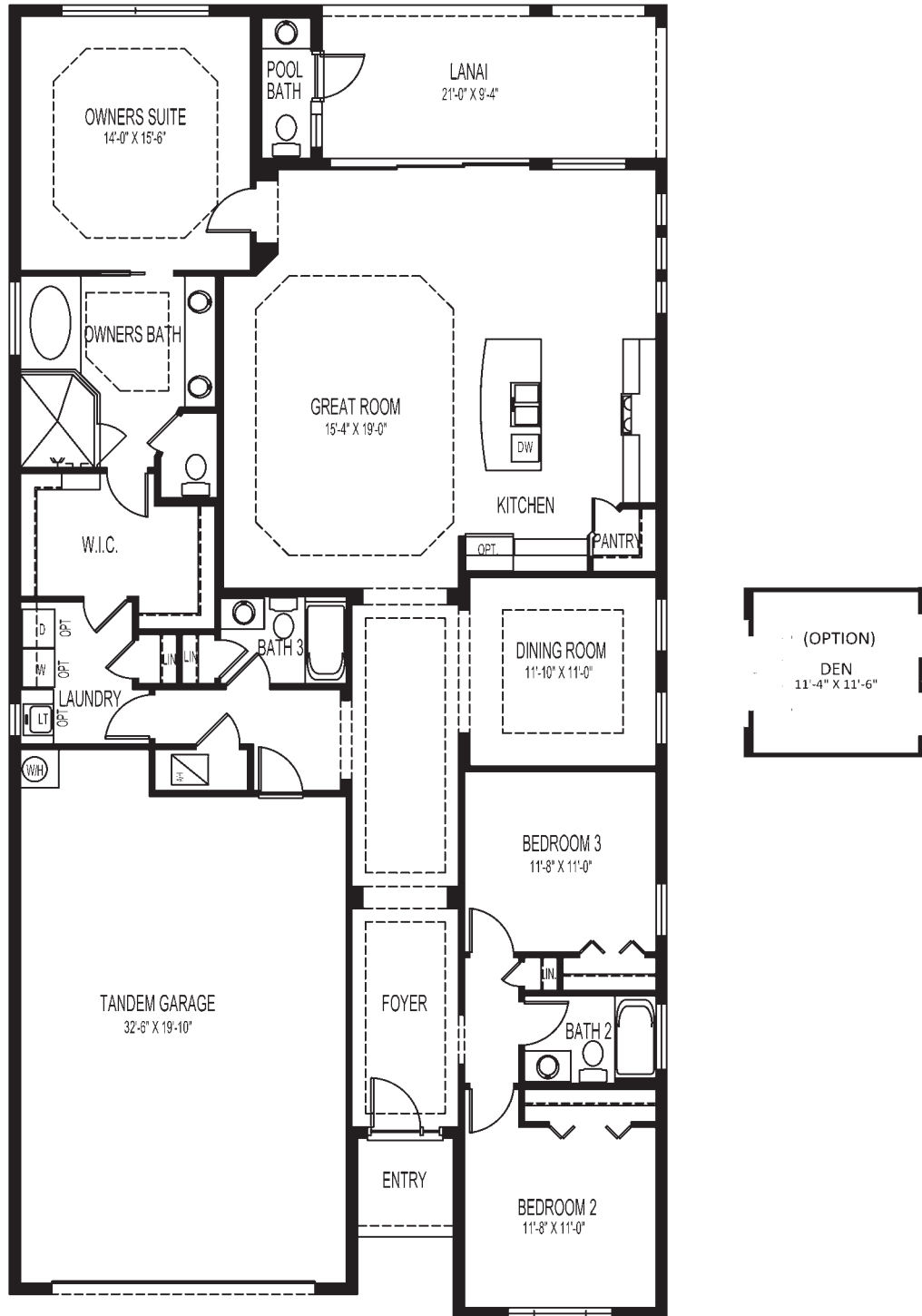
D.R. Horton is A Equal Housing Opportunity Builder. Home and community information, including pricing, included features, terms, availability and amenities, are subject to change and prior sale at any time without notice or obligation. Pictures, photographs, colors, features, and sizes are for illustration purposes only and will vary from the homes as built. Square footage dimensions are approximate. Florida Registered Building Contractor License #CBC1258802. 3.13.19



Elevation L



Elevation M



D.R. Horton is A Equal Housing Opportunity Builder. Home and community information, including pricing, included features, terms, availability and amenities, are subject to change and prior sale at any time without notice or obligation. Pictures, photographs, colors, features, and sizes are for illustration purposes only and will vary from the homes as built. Square footage dimensions are approximate. Florida Registered Building Contractor License #CBC1258802. 3.21.19



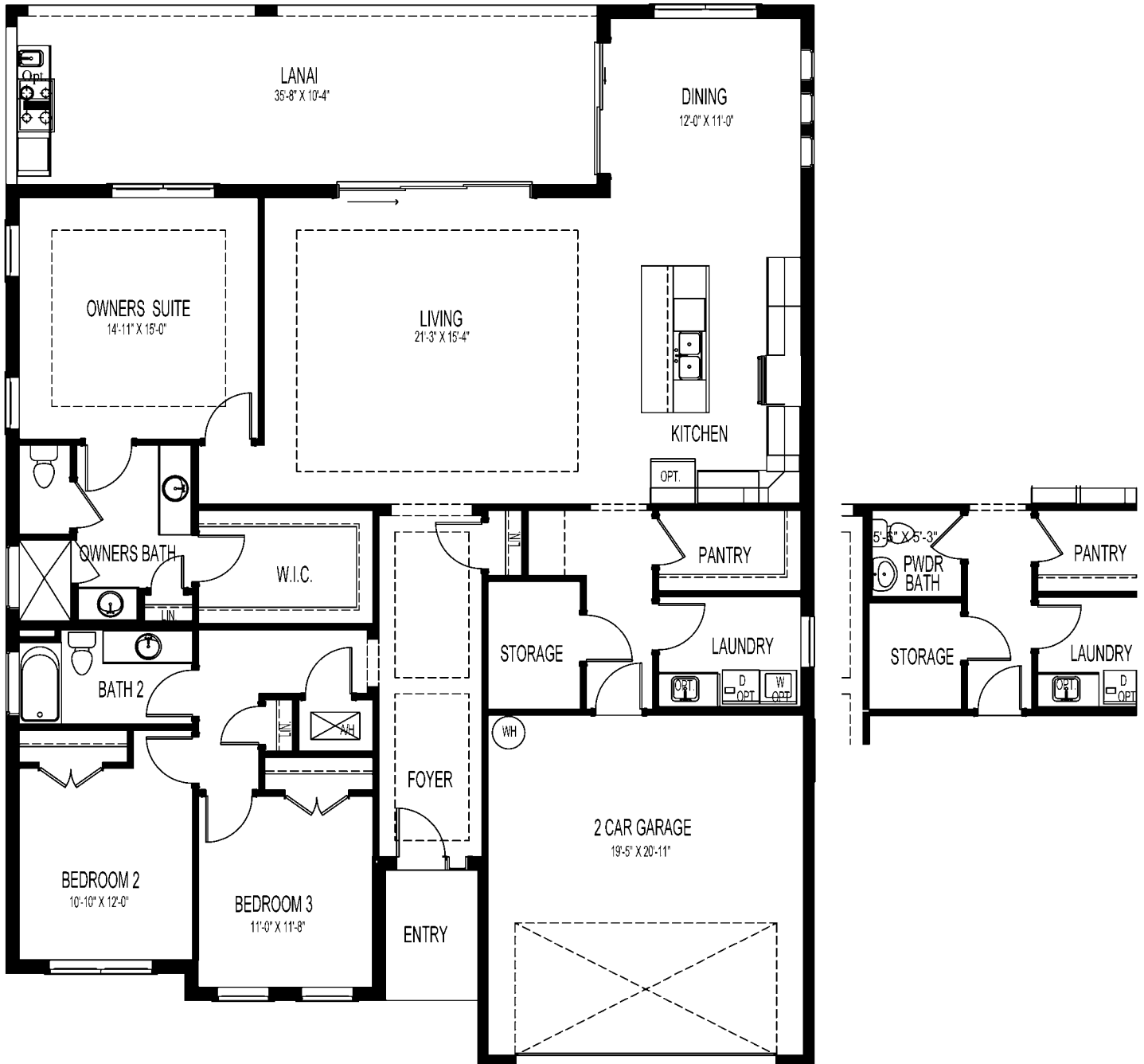
ARTIST RENDERING

Elevation L



ARTIST RENDERING

Elevation M



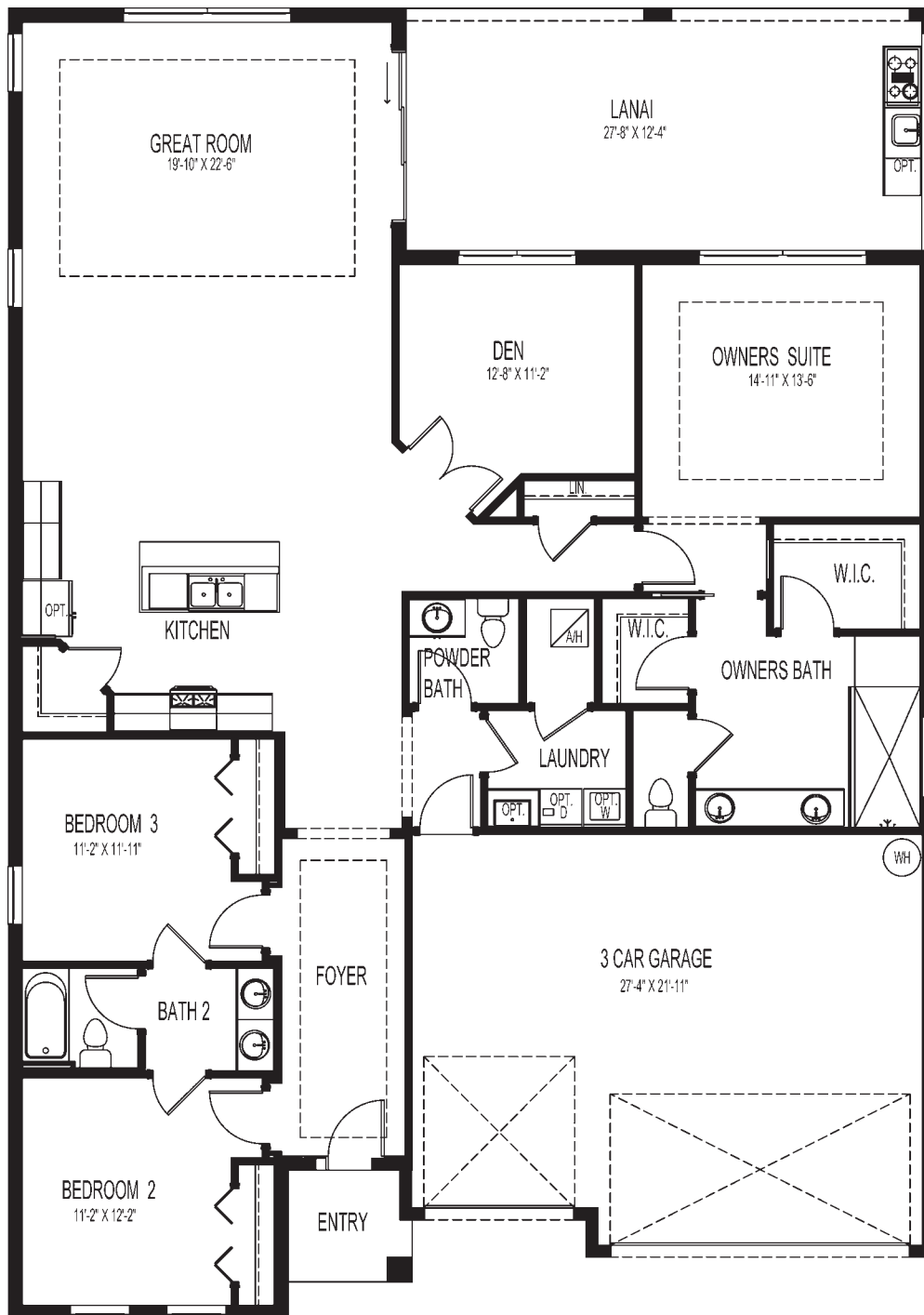
D.R. Horton is A Equal Housing Opportunity Builder. Home and community information, including pricing, included features, terms, availability and amenities, are subject to change and prior sale at any time without notice or obligation. Pictures, photographs, colors, features, and sizes are for illustration purposes only and will vary from the homes as built. Square footage dimensions are approximate. Florida Registered Building Contractor License #CBC1258802. 1.31.19



Elevation L



Elevation M



D.R. Horton is A Equal Housing Opportunity Builder. Home and community information, including pricing, included features, terms, availability and amenities, are subject to change and prior sale at any time without notice or obligation. Pictures, photographs, colors, features, and sizes are for illustration purposes only and will vary from the homes as built. Square footage dimensions are approximate. Florida Registered Building Contractor License #CBC1258802. 11/26/18





Elevation L



Elevation M



D.R. Horton is A Equal Housing Opportunity Builder. Home and community information, including pricing, included features, terms, availability and amenities, are subject to change and prior sale at any time without notice or obligation. Pictures, photographs, colors, features, and sizes are for illustration purposes only and will vary from the homes as built. Square footage dimensions are approximate. Florida Registered Building Contractor License #CBC1258802. 2.21.19



Elevation L



Elevation M



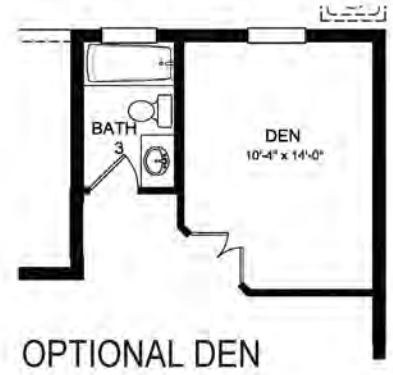
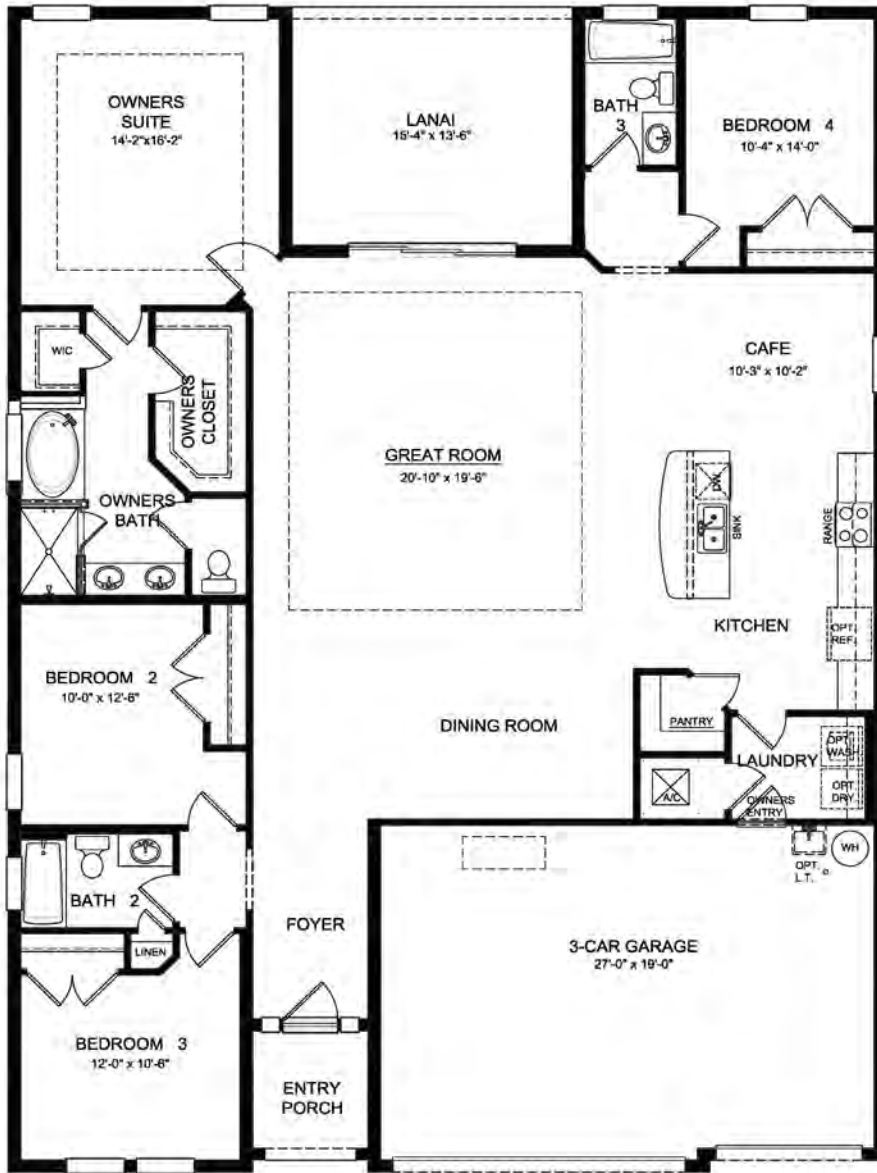
D.R. Horton is A Equal Housing Opportunity Builder. Home and community information, including pricing, included features, terms, availability and amenities, are subject to change and prior sale at any time without notice or obligation. Pictures, photographs, colors, features, and sizes are for illustration purposes only and will vary from the homes as built. Square footage dimensions are approximate. Florida Registered Building Contractor License #CBC1258802. 7.18.19



Elevation B



Elevation D



D.R. Horton is an Equal Housing Opportunity Builder. Home and community information, including pricing, included features, terms, availability and amenities, are subject to change and prior sale at any time without notice or obligation. Pictures, photographs, colors, features, and sizes are for illustration purposes only and will vary from the homes as built. Square footage dimensions are approximate. Florida Registered Building Contractor License #CBC1258802. 4.24.19



Elevation L



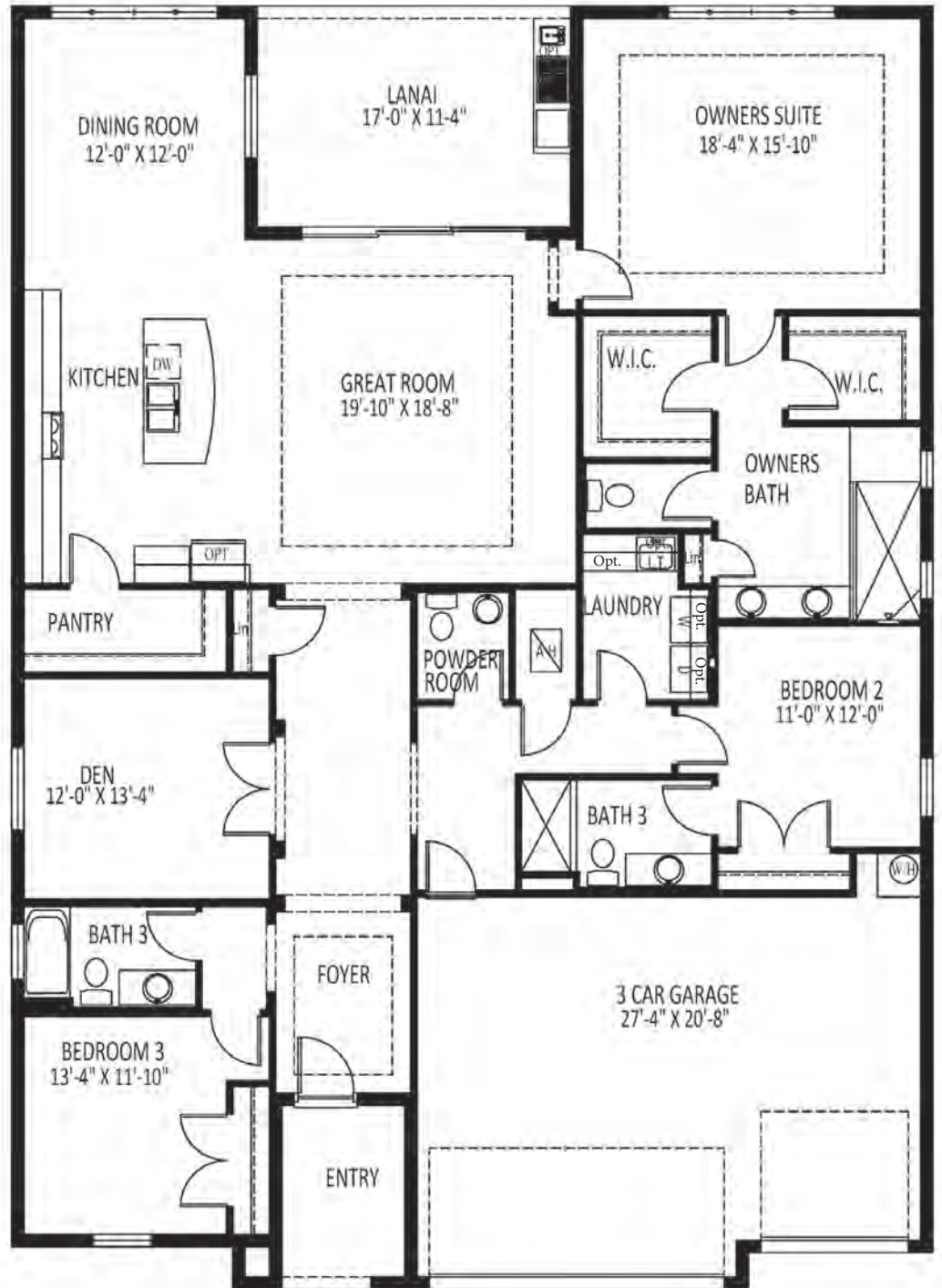
Elevation M



EXTENDED LANAI OPTION



Alternate Kitchen Option



D.R. Horton is A Equal Housing Opportunity Builder. Home and community information, including pricing, included features, terms, availability and amenities, are subject to change and prior sale at any time without notice or obligation. Pictures, photographs, colors, features, and sizes are for illustration purposes only and will vary from the homes as built. Square footage dimensions are approximate. Florida Registered Building Contractor License #CBC1258802. 2.21.19

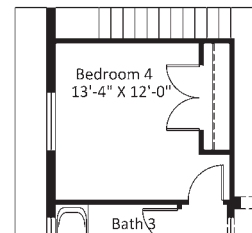
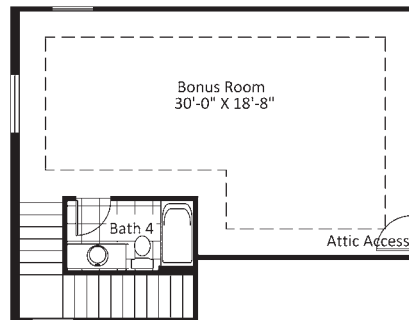
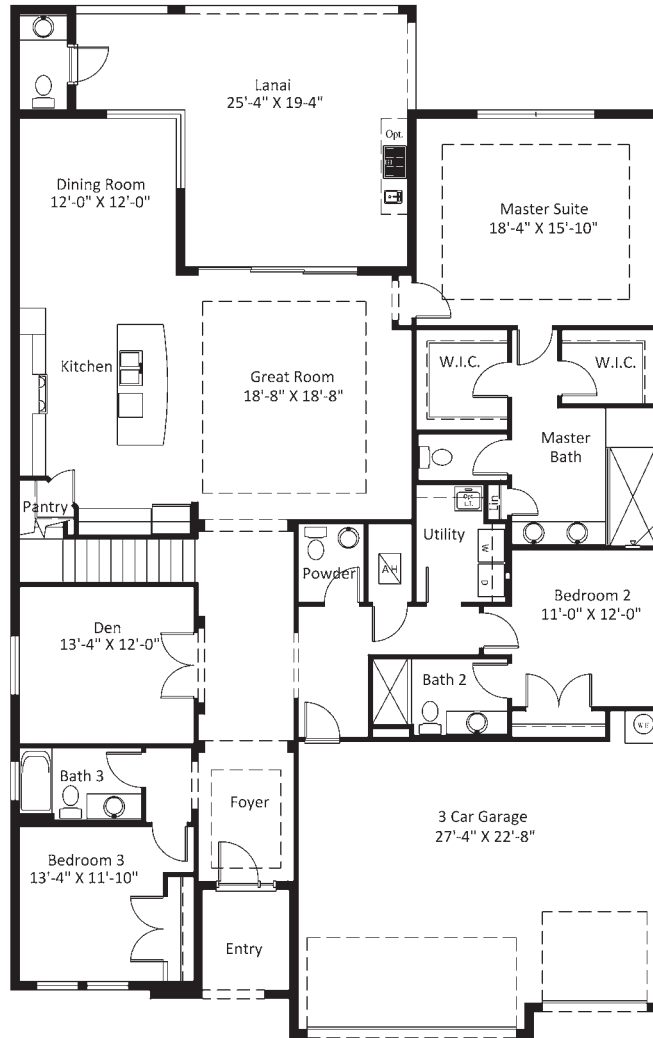




Elevation L



Elevation M



Bedroom 4 Option

D.R. Horton is A Equal Housing Opportunity Builder. Home and community information, including pricing, included features, terms, availability and amenities, are subject to change and prior sale at any time without notice or obligation. Pictures, photographs, colors, features, and sizes are for illustration purposes only and will vary from the homes as built. Square footage dimensions are approximate. Florida Registered Building Contractor License #CBC1258802. 3.13.19

## Quality Construction

- Two architecturally designed front elevations available with each floor plan
- Steel reinforced concrete block construction
- Cement "S" type roof tile
- Covered entry
- Insulated front door with electric door chime
- Paver driveway, entry, front walkway, and lanai
- Screened lanai
- Gutters around entire home
- Code approved hurricane storm panels
- Fully sodded homesites with professionally designed landscaping
- Automatic sprinkler system and community irrigation
- Exterior hose connections
- Exterior weather-proof outlet (GFI) per code
- Attached 2 or 3-car garage with electric opener and remotes (per plan)
- Durable, metal-insulated garage door
- Decorative exterior coach lights on garage (per plan)

## Gourmet Kitchen

- Quality-crafted, custom designed cabinets with 42" uppers and concealed hinges in choice of designer finishes
- Granite countertops in choice of designer colors with backsplash
- Stainless-steel appliance package: Smooth-top, self-cleaning oven, built-in microwave & dishwasher
- Deluxe 1/2-horsepower in-sink disposal
- Ceramic tile flooring in choice of designer colors

## Elegant Baths

- Ceramic tile flooring in choice of designer colors
- Ceramic tile walls in shower areas of all baths
- Full vanity mirrors
- Solid surface countertops with 8" wide-spread chrome faucet
- Elongated commodes in all baths
- Safety tempered, glass shower enclosure in owner's bath

## Distinctive Interiors

- Textured finish on walls and ceilings
- Colonial trim and baseboards with raised panel interior doors (per plan)
- Lever door handles
- Luxurious wall-to-wall carpeting in choice of designer colors
- Walk-in closets in owner's suite
- A/C ducts to all baths and walk-in closets
- Vinyl-coated ventilated shelving in all closets
- Designer lighting fixtures
- Tray ceiling (per plan)
- Rough plumbing for laundry sink (per plan)
- Washer and dryer connections

## Energy & Safety Packages

- R-38 blown insulation in ceilings over all air-conditioned space
- R-13 batt insulation between interior and garage wall
- R-19 batt insulation on second-story walls (per plan)
- R-4.1 foil wall insulation
- 50-Gallon energy-mizer insulated water heater
- Minimum 14-SEER high efficiency central A/C with heat pump and programmable thermostat
- Aluminum framed Low-E insulated sliding glass doors
- Low-E insulated windows
- Diverse LED lighting (per plan)

## Technology

- Exclusive D.R. Horton Home is ConnectedSM smart home package
- Data lines in kitchen and owner's suite
- Cable ready family room and all bedrooms
- Pre-wired for ceiling fans with switches in all bedrooms and family room
- Electric smoke detectors with battery back-up
- Minimum 200 amp electric panel with circuit breakers

## D.R. Horton Difference

- Residential Warranty Corporation (RWC) ten year limited warranty program
- Closing cost incentive when using preferred lender for financing and DHI Title.\*
- National award-winning Customer Service Department
- One-year warranty from D.R. Horton

D.R. Horton is an Equal Housing Opportunity Builder. \*Not all buyers will qualify. Not redeemable for cash. All terms and conditions subject to credit approval, market changes and Home and community information, including pricing, included features, terms, availability. Buyers are not required to finance through preferred lender as a condition of purchase or access to settlement services. Home and community information, including pricing, included features, terms, availability and amenities, are subject to change and prior sale at any time without notice or obligation. Pictures, photographs, colors, features, and sizes are for illustration purposes only and will vary from the homes as built. Florida Registered Building Contractor License #CBC1258802 2.4.20



- = Available DR Horton 60' Homesites
- = Available DR Horton 50' Homesites
- = Available Emerald Homes 74' Homesites
- = Available Emerald Homes 80' Homesites
- = Available DR Horton Condos

