



Elevation C



Elevation D



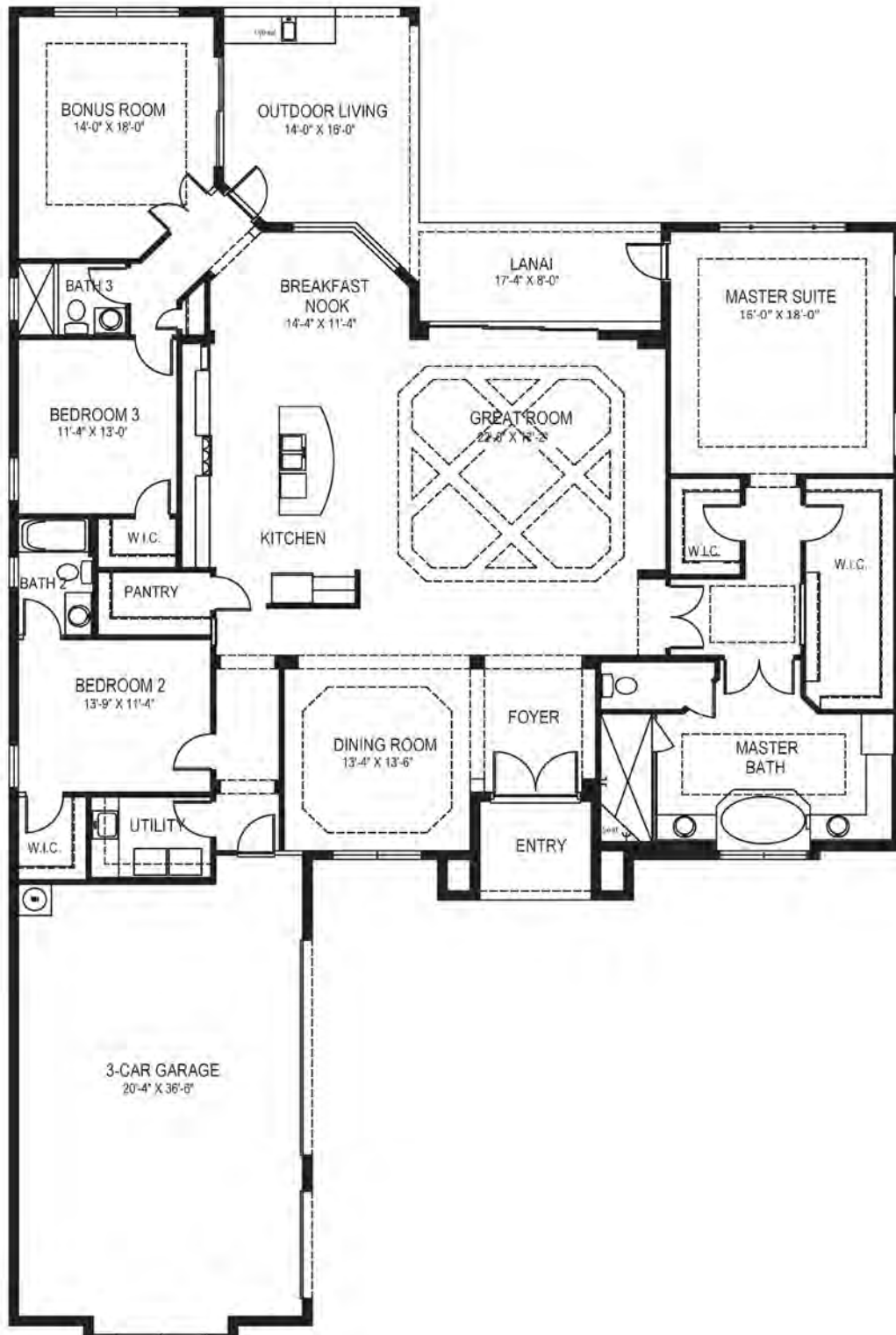
D.R. Horton is A Equal Housing Opportunity Builder. Home and community information, including pricing, included features, terms, availability and amenities, are subject to change and prior sale at any time without notice or obligation. Pictures, photographs, colors, features, and sizes are for illustration purposes only and will vary from the homes as built. Square footage dimensions are approximate. Florida Registered Building Contractor License #CBC1258802. 10.15.19



Elevation J



Elevation K



D.R. Horton is A Equal Housing Opportunity Builder. Home and community information, including pricing, included features, terms, availability and amenities, are subject to change and prior sale at any time without notice or obligation. Pictures, photographs, colors, features, and sizes are for illustration purposes only and will vary from the homes as built. Square footage dimensions are approximate. Florida Registered Building Contractor License #CBC1258802. 2.4.19



ARTIST RENDERING

Elevation J



ARTIST RENDERING

Elevation K



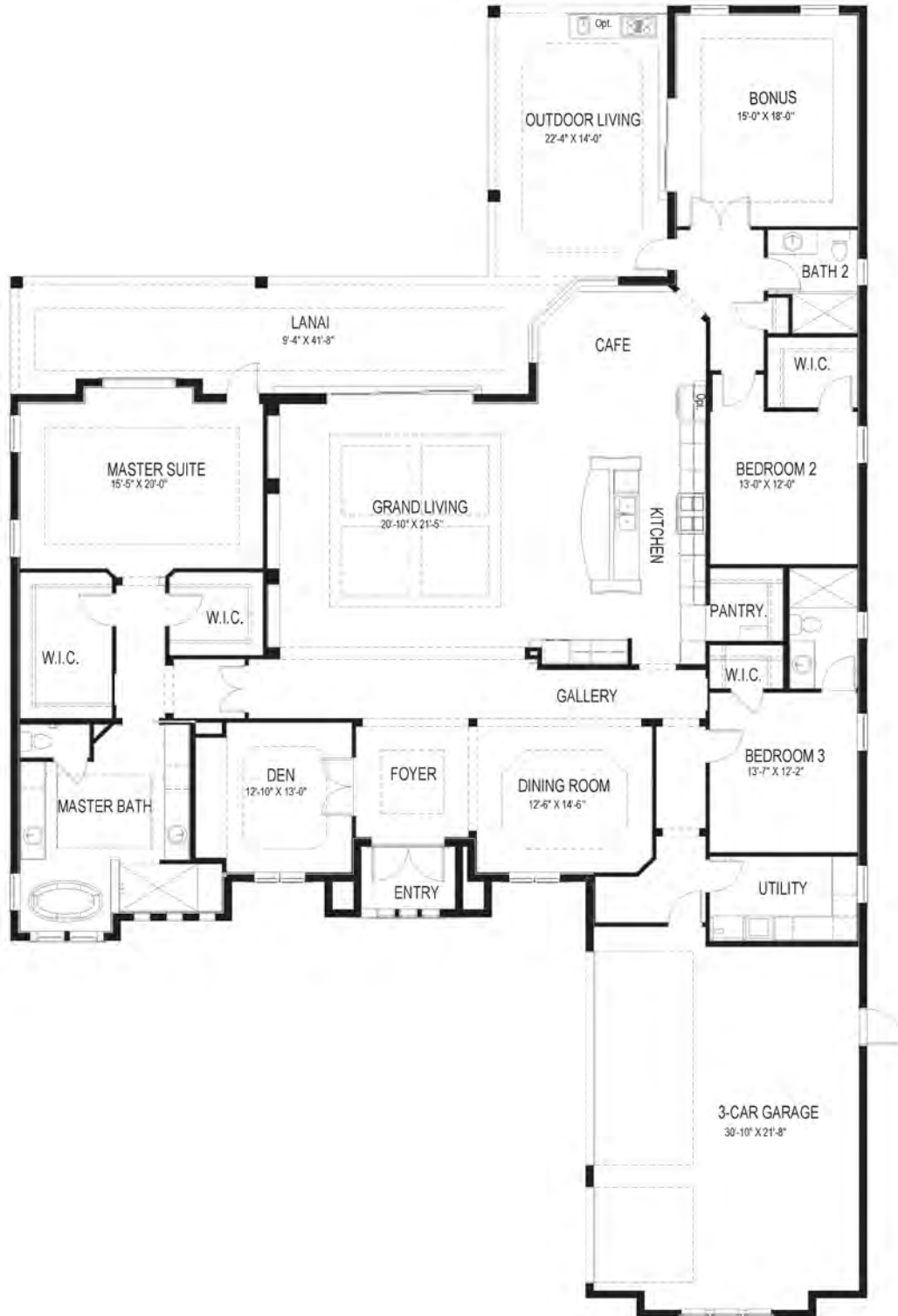
D.R. Horton is A Equal Housing Opportunity Builder. Home and community information, including pricing, included features, terms, availability and amenities, are subject to change and prior sale at any time without notice or obligation. Pictures, photographs, colors, features, and sizes are for illustration purposes only and will vary from the homes as built. Square footage dimensions are approximate. Florida Registered Building Contractor License #CBC1258802. 2.4.19



Elevation J



Elevation K



D.R. Horton is A Equal Housing Opportunity Builder. Home and community information, including pricing, included features, terms, availability and amenities, are subject to change and prior sale at any time without notice or obligation. Pictures, photographs, colors, features, and sizes are for illustration purposes only and will vary from the homes as built. Square footage dimensions are approximate. Florida Registered Building Contractor License #CBC1258802. 2.4.19

Toscana Isles

Venice, Florida

Outside Your Home

- Exterior stonework per elevation
- Precast window & door trim on the front elevation
- Structurally engineered reinforced concrete block exterior wall construction (per plan)
- Cement roof tiles
- Aluminum fascia & soffits
- Pre-cast stone entry surrounds and architectural details (per plan)
- Inviting covered entries
- Code approved hurricane storm panels
- Insulated front door with electric chime
- Large format brick paver driveway, entry walks and lanai
- Electric garage door opener with transmitters
- All underground utilities
- Automated underground sprinkler system
- Elegant bronze finish exterior coach light fixtures (per plan)
- Gutters around the entire house
- Homesites with professionally designed landscape package

Inside Your Home

- 8' high, two panel interior doors
- 5'- $\frac{1}{4}$ " upgraded baseboard and 3'- $\frac{1}{2}$ " door casings
- Decoratively painted throughout
- Spacious walk-in closets in selected areas
- Spacious linen and storage areas per plan
- Decorator trim wall switches throughout
- Crown moldings in all living areas (per plan), master bedroom, vestibule and foyer
- Lever door handles with matching hardware in brushed metal
- Dramatic volume ceilings
- Light textured ceilings and walls in all rooms
- 18"x18" Ceramic tile entry, foyer and laundry room
- Wall-to-wall carpeting in your choice of designer colors
- Coffered ceilings (per plan)
- Epoxy floor in garage

Baths

- 18"x18" Ceramic tile flooring
- Ceramic tile shower floors and master shower seat
- Drop in garden tub with ceramic tile deck and ceramic tile skirt (per plan)
- Moen® brushed-nickel faucets
- 8" Spread sink faucets in all baths
- Granite countertops with rectangular sinks in all baths
- Frameless shower enclosures
- All baths have adult-height custom-designed cabinetry

Kitchen

- 18"x18" Ceramic tile flooring in choice of designer colors
- Stainless-steel appliance package to include:
 - refrigerator, 36" radiant electric cooktop with 5 burners, built-in microwave, electronic convection single-wall oven, 36" wall mounted vent hood, dishwasher.
- Double-bowl stainless-steel undermount sink
- 6"x6" full tile backsplash
- Cabinetry with 42" uppers, concealed hinges, crown molding and light rail
- Dove tail drawers with full extension soft close glides
- Soft close cabinet doors
- Granite countertops
- Moen® spot resistant stainless-steel faucet

Technology, Safety & Security

- Exclusive D.R. Horton Home is ConnectedSM package
- Data lines in kitchen and master bedroom
- Cable ready in family room and all bedrooms
- Pre-wired for ceiling fans with switches in all bedrooms and family room
- Electric smoke detectors with battery back-up
- Minimum 200 amp electric panel with circuit breakers

Energy Saving Features

- R-38 blown insulation in ceilings over all air-conditioned space
- R-13 batt insulation between interior and garage wall
- R-19 batt insulation on second-story walls (per plan)
- R-4.1 foil wall insulation
- 50 Gallon electric energy efficient water heater (per plan)
- Minimum 14-SEER high efficiency central A/C with heat pump and programmable thermostat
- Aluminum framed Low-E insulated sliding glass doors
- Low-E insulated windows
- Diverse LED lighting (per plan)

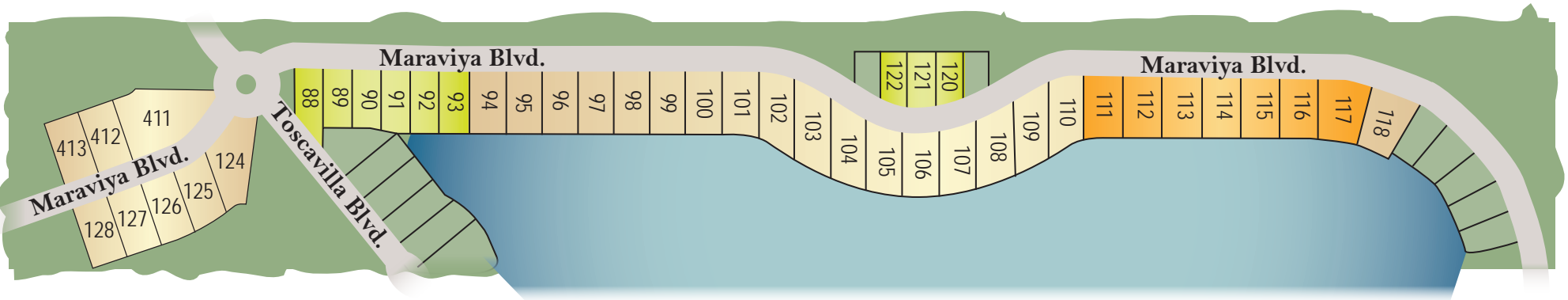
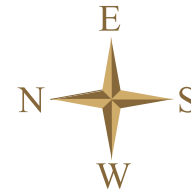
Peace of Mind


- Residential Warranty Corporation (RWC) ten year limited warranty program
- Closing cost incentive when using preferred lender for financing and DHI Title.*


Toscana Isles · 110 Toscavilla Boulevard · Venice, FL · 941.488.7897 · drhorton.com/swfla




*Not all buyers will qualify. Not redeemable for cash. All terms and conditions subject to credit approval, market changes and Home and community information, including pricing, included features, terms, availability. Buyers are not required to finance through preferred lender as a condition of purchase or access to settlement services. Home and community information, including pricing, included features, terms, availability and amenities, are subject to change and prior sale at any time without notice or obligation. Pictures, photographs, colors, features, and sizes are for illustration purposes only and will vary from the homes as built. Square footage dimensions are approximate. Florida Registered Building Contractor License #CBC1258802 9.9.19



 = 80'
Homesites

 = 74'
Homesites

 = 60'
Homesites

D.R. Horton is A Equal Housing Opportunity Builder. *This is not a copy of a recorded map. This map is an artist's rendition. Lot layout, size, and measurements are based on information available at time of printing and are subject to change without notice. A recorded plot may be made available upon request. Home layout on lot is solely at seller's discretion. CBC1258802 3.13.19